

t:slim X2TM

Insulin Pump

Pump Start

Training Booklet



You have been given this resource because your healthcare professional has chosen this product as a suitable treatment option for you.

Always read the label and use only as directed. Read the warnings available on www.amsldiabetes.com.au/resources before purchasing.



Table of Contents



Welcome to Pumping with Tandem

1

My t:slim X2™ Insulin Pump Settings

2

Personal Profiles

2

Pump Alert Settings

3

Quick Reference Guides

4

View Status

4

Personal Profiles

5

Instructions for Drawing Insulin from Cartridge into Syringe

6

Instructions for Filling the Cartridge

6

Load a Cartridge

7

Tandem AutoSoft™ 90 Infusion Set t:lock

8

Tandem AutoSoft™ 30 Infusion Set t:lock

9

Tandem VariSoft™ Infusion Set t:lock

10

Tandem TruSteel™ Infusion Set t:lock

11

Bolus

12

Extended Bolus

13

Setting a Temp Basal Rate

14

Stop and Resume Insulin Delivery

15

diasend® Personal Uploader - Getting Started Guide

16

Flying with your t:slim X2 Insulin Pump

19

t:slim X2 System Specifications

20

t:slim X2 System Options and Settings

21

t:lock™ Infusion Sets & Cartridges

23

Welcome to Pumping with Tandem



Hi there!

Thank you for choosing the t:slim X2 Insulin Pump to help manage your diabetes.

This booklet will provide you with some helpful resources to get you started. For more information, please refer to your t:slim X2 Insulin Pump User Guide.

If you have any concerns about your dosage, Blood Glucose (BG) levels or test positive for ketones, please contact your healthcare professional or emergency department, as we are unable to advise on these issues or any clinical aspect of your diabetes management.



If you need technical assistance with your insulin pump, we have a dedicated **24/7 Australian-based Customer Care Team available on 1300 851 056.**

The Tandem t:simulator app can help your family/support team get familiar with your new pump! Search for the t:simulator on the App Store or Google Play.



Let's Get Started!



My t:slim X2 Insulin Pump Settings



You have now received your new t:slim X2 Insulin Pump. This document will assist you with entering all of your settings provided by your healthcare professional into your new t:slim X2 Insulin Pump.



Personal Profiles

To begin, select:

Options > My Pump > Personal Profiles > New

Program No 1. Weekday

Timed Settings

Time	Basal Rate	Correction Factor	Carb Ratio	Target BG
12:00/00:00				

Bolus Settings

IOB Duration	Max Bolus	Carbs
hrs		<input type="checkbox"/> On <input type="checkbox"/> Off

Program No 2.

Timed Settings

Time	Basal Rate	Correction Factor	Carb Ratio	Target BG
12:00/00:00				

Bolus Settings

IOB Duration	Max Bolus	Carbs
hrs		<input type="checkbox"/> On <input type="checkbox"/> Off

Pump Alert Settings

Select:

Options > My Pump > Alert Settings > Pump Alerts

Low Insulin units

Auto-On/Off ☐ Off ☐ On **Set to Auto-On by default*

In order to begin using your new t:slim X2 Insulin Pump, you must manually enter the settings discussed with your healthcare professional (or directly from your previous insulin pump if applicable) into your new t:slim X2 Insulin Pump using the information you have recorded on the previous pages.

Contact your healthcare professional team if you have any questions about the settings you are entering. Failure to use settings determined by your healthcare professional team will likely result in incorrect insulin delivery.

If you require technical assistance with your insulin pump, please call our **AMSL Diabetes Customer Care Team on 1300 851 056**.

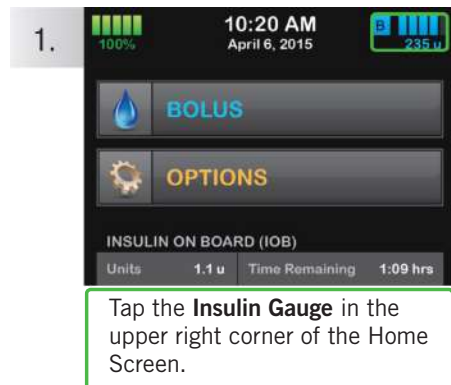
IMPORTANT: These instructions are simplified to supplement training by your healthcare professional. Before you begin, you should carefully read the t:slim X2 Insulin Pump User Guide and any inserts that come with your system.



View Status

on the t:slim X2™ Insulin Pump

The instructions below are provided as a reference tool for those who are already familiar with the use of an insulin pump and with insulin therapy in general. Not all screens are shown.



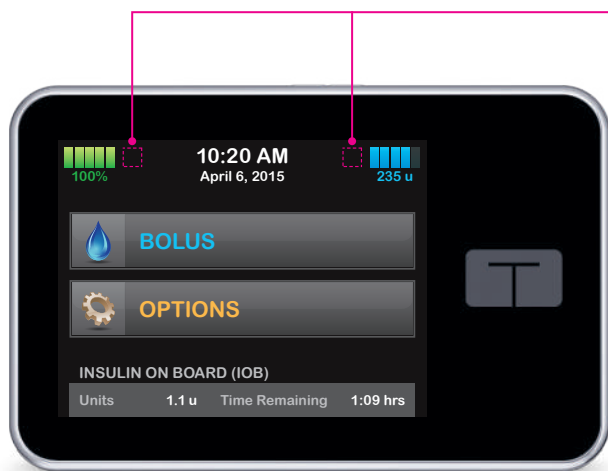
Your t:slim Insulin Pump will display the name of your active profile, your current basal rate, the time and amount of your last bolus, and your current insulin-to-carb ratio.

If you have an active Extended Bolus, this screen will show how much insulin has been delivered out of the total amount requested.



Scroll down by tapping the **DOWN ARROW** to display your current Correction Factor, Blood Glucose (BG) Target, Insulin Duration, and whether or not you are entering boluses based on Carbohydrates.

Explanation of Icons



The following icons may appear in the areas to the left or right of the time and date on your pump's Home Screen.



A system reminder, alert, error, or alarm is active. Unlock screen to view.



A bolus is being delivered.



All insulin deliveries are stopped.



Basal insulin is programmed and being delivered.



A basal rate of 0 u/hr is active.



A temporary basal rate is active.



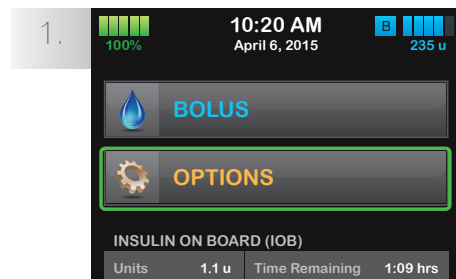
A temporary basal rate of 0 u/hr is active.

Personal Profiles

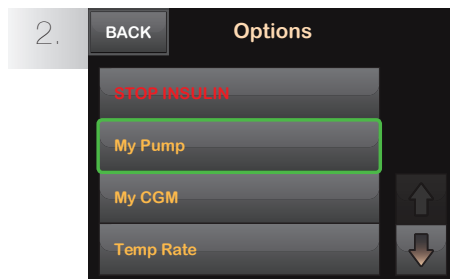
on the t:slim X2™ Insulin Pump



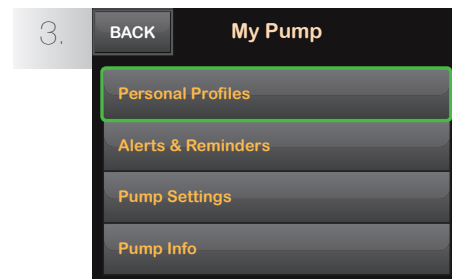
The instructions below are provided as a reference tool for those who are already familiar with the use of an insulin pump and with insulin therapy in general. Not all screens are shown.



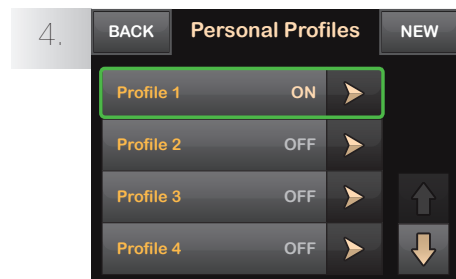
Tap **OPTIONS**.



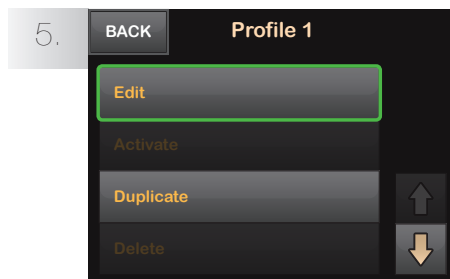
Tap **My Pump**.



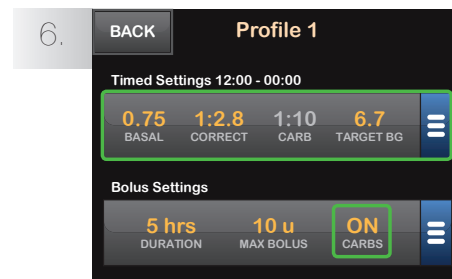
Tap **Personal Profiles**.



Tap the name of the Personal Profile to View/Edit.

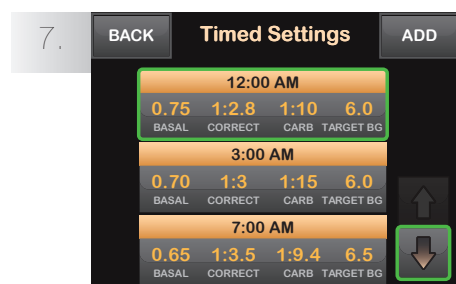


Tap **Edit** to edit or view your settings.



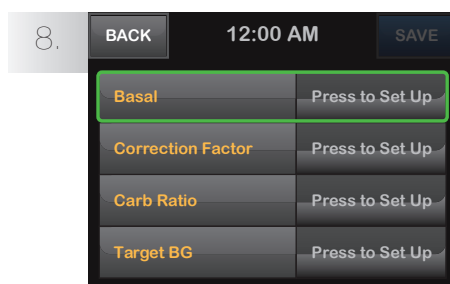
Tap your current settings to see the other segments of your day.

Turn **ON** to activate bolus calculator.



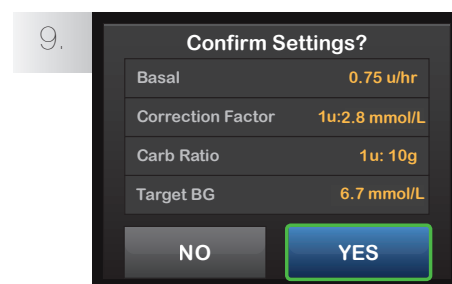
Tap the time segment you wish to edit.

If not all segments are visible, tap the arrow to scroll down.



Tap **Basal**, **Correction Factor**, **Carb Ratio**, or **Target BG** to set up, then tap **DONE**.

When you are finished, tap **SAVE**.



Confirm settings. Recent changes appear in orange.

Tap **YES** to confirm.

Instructions for Drawing Insulin from Cartridge into Syringe

Use proper clean technique while performing the following:

1. Inspect the needle and syringe package for any signs of damage. Discard any damaged product.
2. Wash your hands thoroughly.
3. Remove the needle and syringe from their packaging. Securely twist needle onto syringe. Safely remove protective cap from needle by pulling outward.
4. Insert needle into the prefilled insulin container (insulin penfill or vial).
5. Slowly pull back the plunger to the desired amount of insulin.
6. Once filled, Remove syringe from the prefilled insulin container.
7. Tap the syringe so that any air bubbles rise to the top. Then slowly push the plunger upwards, forcing any air bubbles out of the filling syringe.
8. Check the syringe for air bubbles and do one of the following:
 - » If there are air bubbles present, repeat step 7 onwards.
 - » If no air bubbles are present, you are ready to move on to the next step.

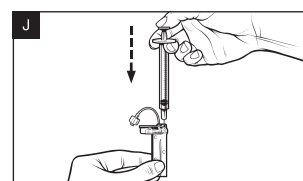
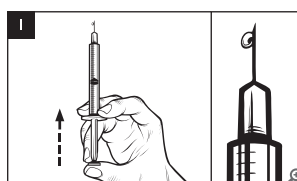
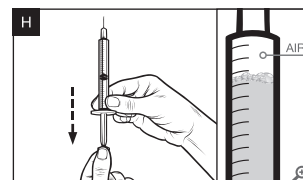
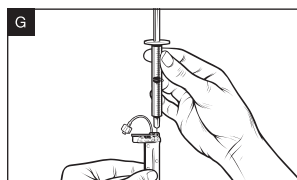
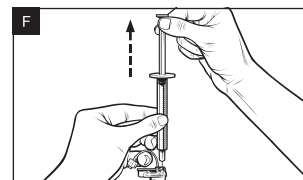
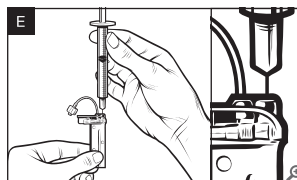
Instructions for Filling the Cartridge



If instructed to load a filled cartridge, perform the following before loading the cartridge onto the pump.

Refer to the User Guide that came with your system for detailed installation instructions.

1. Inspect the cartridge package for any signs of damage. Discard any damaged product.
2. Open the package and remove the cartridge.
3. Hold the cartridge upright and gently insert the needle into the white insulin fill port on the cartridge (see image E). The needle is not intended to go all the way in, so do not force it.
4. Keeping the syringe vertically aligned with the cartridge, and the needle inside the fill port, pull back on the plunger until it is fully retracted (see image F). This will remove any residual air from the cartridge. Bubbles will rise toward the plunger.
5. Make sure the needle is still in the fill port and release the plunger. Pressure will pull the plunger to its neutral position but it will NOT push any air back inside the cartridge (see image G).
6. Withdraw the needle from the fill port.
7. Turn the syringe upright and pull down on the plunger (see image H). Flick the barrel to make sure that any air bubbles rise to the top.
8. Gently press on the plunger to remove air bubbles until insulin fills the needle hub and you see a drop of insulin at the tip of the needle (see image I).
9. Re-insert the needle in the fill port and slowly fill the cartridge with insulin (see image J). It is normal to feel some back pressure as you slowly press on the plunger.
10. Maintain pressure on the plunger while you remove the needle from the cartridge. Check the cartridge for leaks. If you detect insulin leaking, discard the cartridge and repeat entire process with a new cartridge.
11. Always dispose of used needles, syringes, cartridges, and infusion sets following your community's regulation.



Load a Cartridge

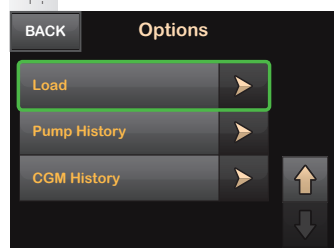
on the t:slim X2™ Insulin Pump



OPTIONS

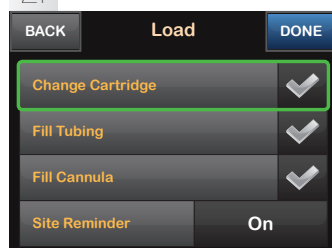
The instructions below are provided as a reference tool for those who are already familiar with the use of an insulin pump and with insulin therapy in general. Not all screens are shown.

1.



From the Options menu, tap the Down Arrow, then tap **LOAD**.

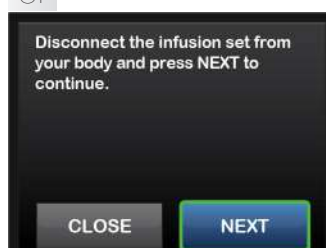
2.



From the Load menu, tap **Change Cartridge**. Screen will display that all insulin deliveries will be stopped.

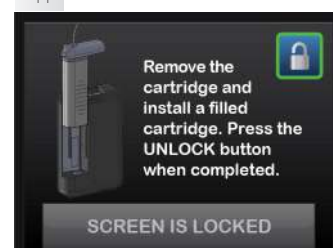
Tap **YES** to continue.

3.



Disconnect the infusion set from your body and tap **NEXT** to continue.

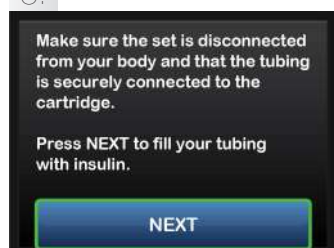
4.



Remove the used cartridge. Install filled cartridge. Tap **UNLOCK** icon when completed

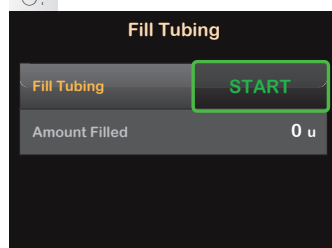
Tap **NEXT** to continue.

5.



Verify that the infusion set is disconnected from your body. Connect the infusion set tubing to the tubing connector on the cartridge. Tap **NEXT**.

6.



Hold the pump vertically to ensure any air in the cartridge will be dispelled first.

Tap **START**. The pump will beep and vibrate regularly while the tubing is being filled.

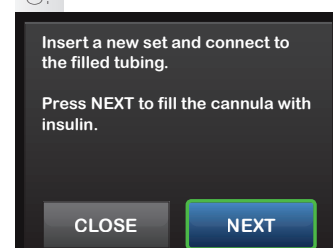
7.



Tap **STOP** after 3 drops of insulin are seen at the end of the infusion set tubing.

Verify that drops are seen and tap **DONE**.

8.

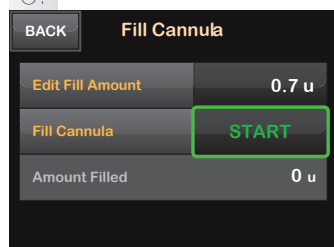


Tap **Fill Cannula**.

Insert a new infusion set and connect filled tubing to site, then tap **NEXT**.

NOTE: If you are using a steel needle infusion set, there is no cannula fill. Skip to 10.

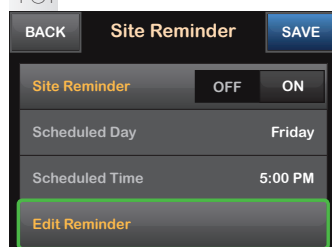
9.



Tap **Edit Fill Amount**.

Select amount needed for cannula fill. Refer to your infusion set instructions for use for proper cannula fill amount. Tap **START**.

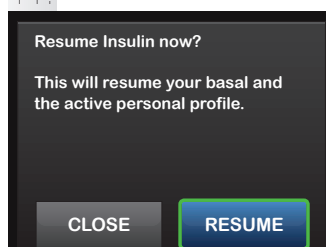
10.



After the cannula fill is complete, you can set a Site Change reminder.

Tap **SAVE** if correct. Tap **Edit Reminder** if settings need to be changed.

11.

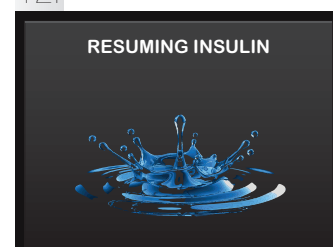


Load screen is displayed.

Tap **DONE**. A reminder to test BG in 1 to 2 hours will display.

Tap **RESUME**.

12.



RESUMING INSULIN screen is temporarily displayed.

Tandem AutoSoft 90 Infusion Set t:lock

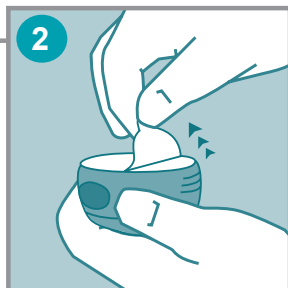
Quick Reference Guide



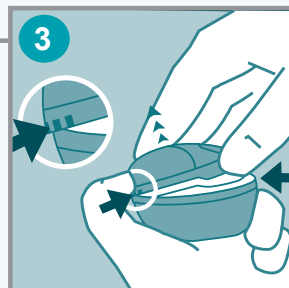
AutoSoft 90 combines the insertion device and infusion set into a single sterile, portable unit. Ensure you wash and dry your hands thoroughly and clean the area with a disinfectant wipe before following the steps below.



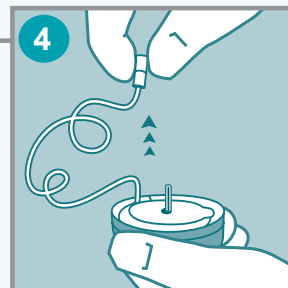
Check the tamper-proof seal and sterile paper. Do not use device if the seal or paper has been broken. Pull the red tape to remove the seal.



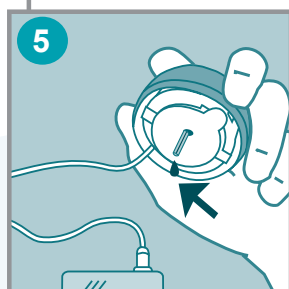
Pull off the sterile paper. Do not touch the spring.



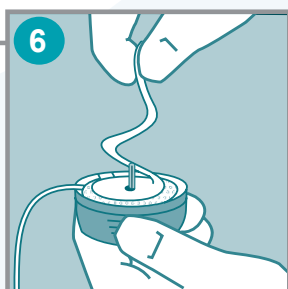
Firmly press the three raised dots on each side of the lid with one hand and pull with the other hand.* **CAUTION:** be careful not to bend the introducer needle of the AutoSoft 90 when removing the lid.



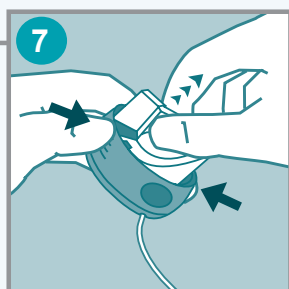
Carefully unwind tubing and place a finger on the adhesive backing paper when fully unwinding the tubing.^



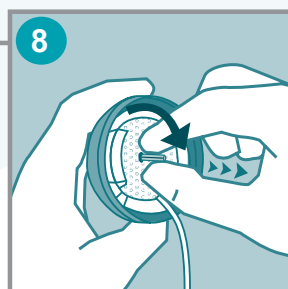
Connect AutoSoft 90 to a reservoir/cartridge and the pump. Prime the infusion set according to the pump manufacturer's instructions for use. Ensure there are no air bubbles in the tubing of AutoSoft 90.~



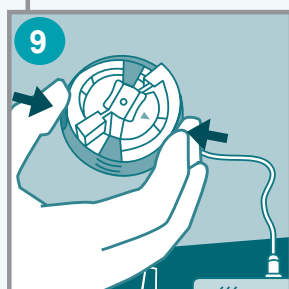
Pull up gently to remove the adhesive backing paper, which will come off in a single piece.



Place fingers on lined indentations when loading the insertion mechanism. Pull spring up until you hear a "click."

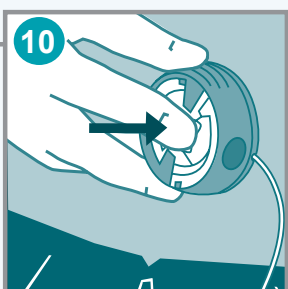


Carefully remove the needle guard by gently twisting and then pulling it. Secure tubing in slot.



Place AutoSoft 90 on your clean, dry insertion site and press the round indentations on each side of the insertion mechanism at the same time.

CAUTION: before positioning AutoSoft 90 over clean insertion site, place the tubing in the slot to ensure that the tubing is not caught underneath the device during insertion.



Push in gently on the centre of the insertion mechanism to secure adhesive on the skin.



Grasp centre of insertion mechanism. Pull back gently and slowly. Fill the empty space in the cannula with the following prime:

U-100 insulin
6 mm: 0.3 units (0.003 mL)
9 mm: 0.5 units (0.005 mL)



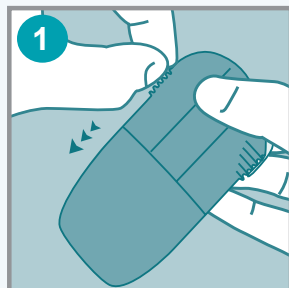
Put lid securely in place until you hear a "click." With lid properly connected, AutoSoft 90 can be disposed of safely.

Tandem AutoSoft 30 Infusion Set t:lock

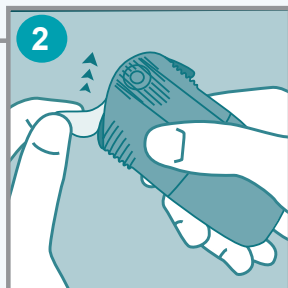
Quick Reference Guide



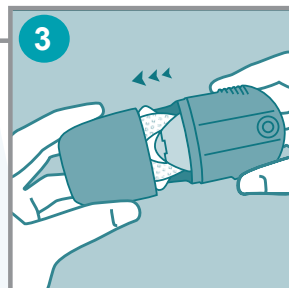
AutoSoft 30 combines the insertion device and infusion set into a single sterile, portable unit. Ensure you wash and dry your hands thoroughly and clean the area with a disinfectant wipe before following the steps below.



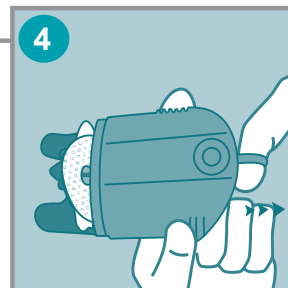
Check the tamper-proof seal and sterile paper. Do not use device if the seal or paper has been broken. Pull the red tape to remove the seal.



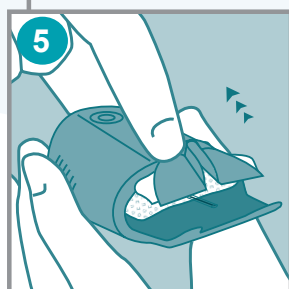
Pull off the sterile paper. Do not touch the spring.



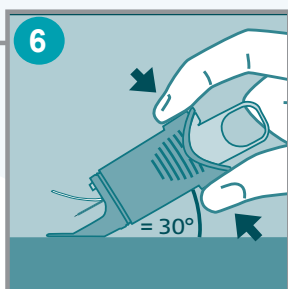
Hold on the lined indentations with one hand and pull the lid off with the other.*
CAUTION: be careful not to bend or touch the AutoSoft 30 introducer needle.



Place your fingers on the lined indentations on each side. Pull back the spring softly until you hear a "click". The needle protector will lift up or peel off. Do not touch or bend the needle.



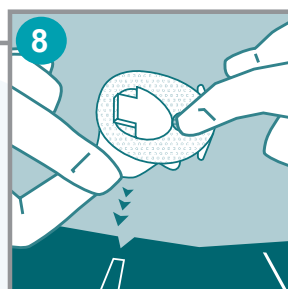
Immediately before insertion, carefully bend back the needle protector and remove it. This will remove part of the adhesive backing paper. Be sure the tape is not stuck on the introducer needle.



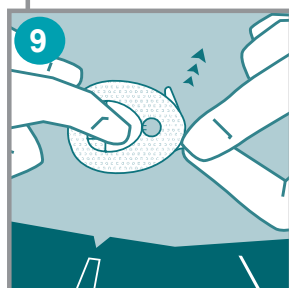
INSERTION: place your index finger on the top release button and your thumb on the bottom release button. Position AutoSoft 30 with its legs level (flat) on the skin to ensure an insertion angle of 30°. Maintain a 30° angle while inserting and gently squeeze once to insert in AutoSoft 30.



Make sure that the cannula stays in place: put your finger gently on the clear window while removing the insertion device and introducer needle. Pull it gently straight back.



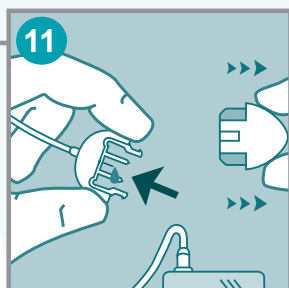
Secure the cannula with one finger on the clear window. Carefully remove the backing paper under the cannula housing as shown.



Remove the backing paper under the front end. Massage the adhesive thoroughly on to the skin.
IMPORTANT: do not attempt to straighten the adhesive if curled.



Put the lid back on for disposal.



Remove the circular protective cap. Prime infusion set until insulin dispenses from the tip. Ensure there are no air bubbles in the tubing or AutoSoft 30. Consult your pump manufacturer's instructions for use for proper priming procedures. Place a finger in front of the cannula housing and insert the connector needle. Make sure the connector locks with a "click." Fill the empty space in the cannula with the following prime:

U-100 insulin:
0.7 units (0.007 mL)

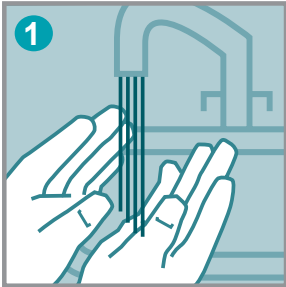
*IMPORTANT NOTE: If the infusion set is not securely placed in the insertion device with the needle pointing straight ahead, pain or minor injury may occur during insertion. Please note: this guide only illustrates some of the steps to follow when inserting AutoSoft 30 and it is not a substitute for reading the instructions for use and cautions, which come with the AutoSoft 30 product. When initially trying a new infusion set, we recommend this to be done under the supervision of a healthcare professional.

Tandem VariSoft Infusion Set t:lock

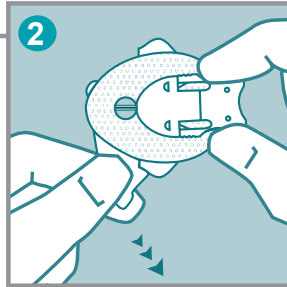
Quick Reference Guide



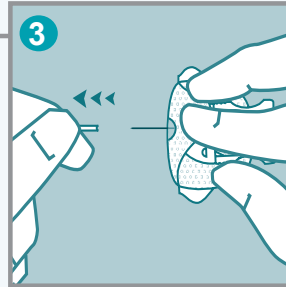
This guide is a summary only and intended as a quick reference guide. Always refer to package insert for full instructions and precautions.



1 Wash and dry your hands thoroughly. Likewise, clean the insertion site and allow to dry. Use of adhesive wipes will clean the site and help the infusion set to stay in place.



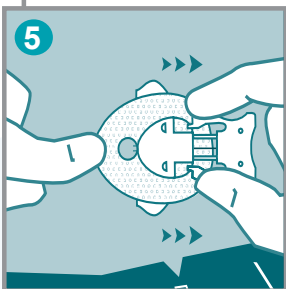
2 Hold the infusion set with one hand. Gently remove the adhesive backing paper with the other hand.



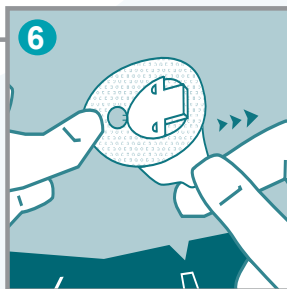
3 Remove protective sleeve from insertion needle.



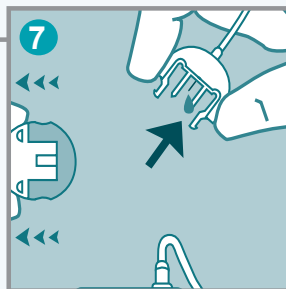
4 Pinch skin tightly and insert needle on 30 - 45° angle.



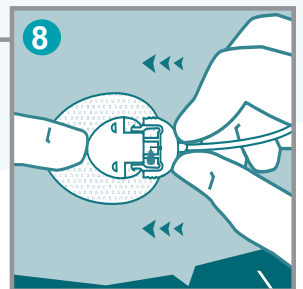
5 Secure the infusion set with one finger in front of the clear window. Squeeze release section of insertion set by pressing on ridged areas either side of the set. Remove the insertion needle and dispose of in a sharps container.



6 Place one finger in front of the clear window. Gently remove the backing tape from the other half of the site. Hold skin tight and gently press outside of adhesive tape to secure edges.



7 Connect the line to the cartridge in the pump and prime the line. Ensure there are no air bubbles.



8 Connect the line to the site and make sure an audible click is heard and fill the cannula.

NOTE: fill the empty space in the cannula with the following prime:

U-100 insulin:
0.7 units (0.007 mL)

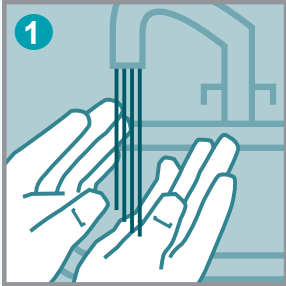
*IMPORTANT NOTE: if the infusion set is not securely placed in the insertion device with the needle pointing straight ahead, pain or minor injury may occur during insertion. Please note: this guide only illustrates some of the steps to follow when inserting VariSoft and it is not a substitute for reading the instructions for use and cautions, which come with the VariSoft product. When initially trying a new infusion set, we recommend this to be done under the supervision of a healthcare professional.

Tandem TruSteel Infusion Set t:lock

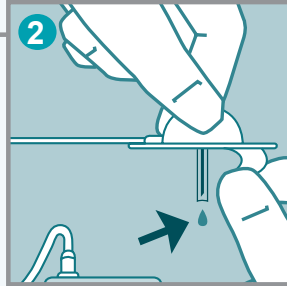
Quick Reference Guide



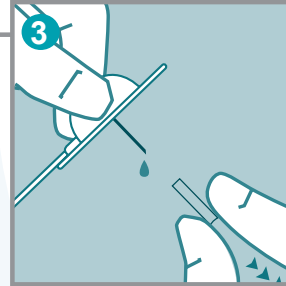
This guide is a summary only and intended as a quick reference guide. Always refer to package insert for full instructions and precautions.



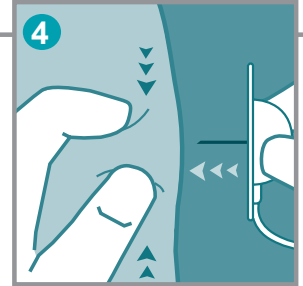
1 Wash and dry your hands thoroughly. Likewise, clean the insertion site and allow to dry. Use of adhesive wipes will clean the site and help then infusion set to stay in place.



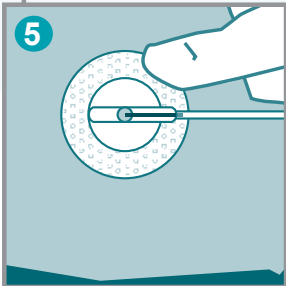
2 Connect the line to the cartridge in the pump. Connect the needle part of the infusion set to the line. Prime the insulin through the line until you maintain a steady flow of insulin for six seconds. Ensure there are no air bubbles.



3 Remove the tape and needle protector from the infusion set.



4 Hold the infusion set just above the needle with one hand. Pinch the skin at the injection site with the other hand. Insert the infusion set to its full length at a 90° angle (straight in).



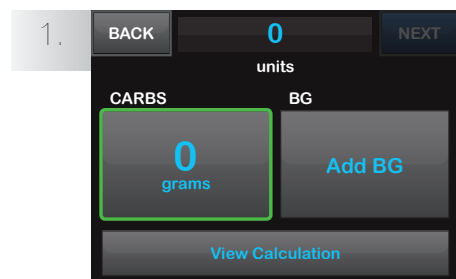
5 Ensure the fixation material is properly placed and adequately covers the injection site.

Bolus

on the t:slim X2™ Insulin Pump

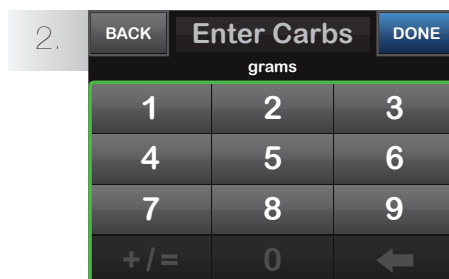


The instructions below are provided as a reference tool for those who are already familiar with the use of an insulin pump and with insulin therapy in general. Not all screens are shown.



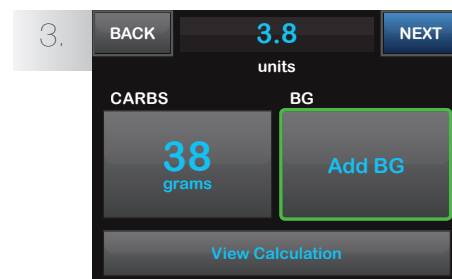
Tap **0 Grams** to enter the carbs for your bolus.

NOTE: If this button reads “units”, the Carb feature is turned off in the active profile.

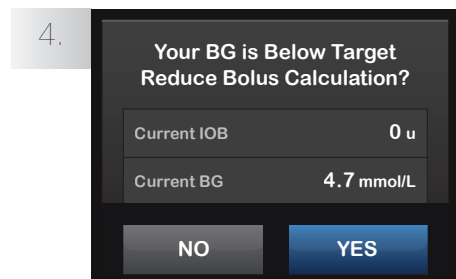


Enter desired value. Be sure “grams” is displayed above keypad for food boluses.

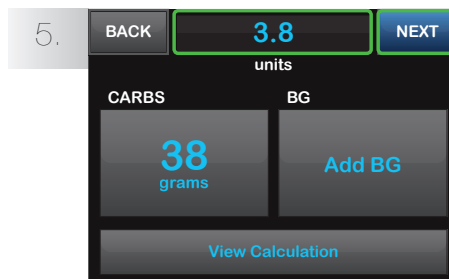
Tap **DONE** to continue.



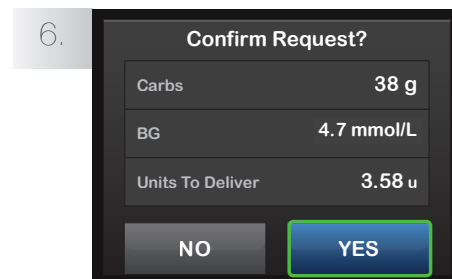
Tap **Add BG** to enter your blood glucose. Be sure “mmol/L” is displayed above keypad when entering BG values.



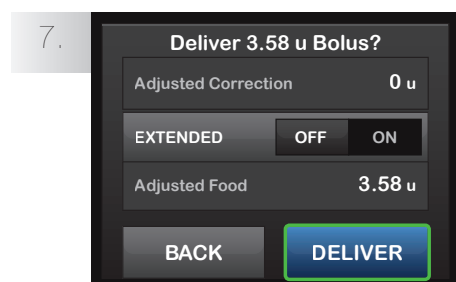
If a BG is entered that is below the target, but above 3.9 mmol/L, you will be offered the option to reduce the bolus amount. To accept that reduction tap **YES** otherwise tap **NO**.



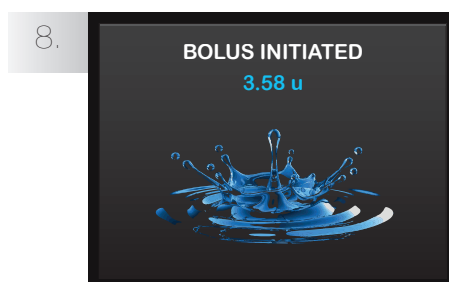
Tap **NEXT** to continue. Tap units field to manually adjust recommended dose.



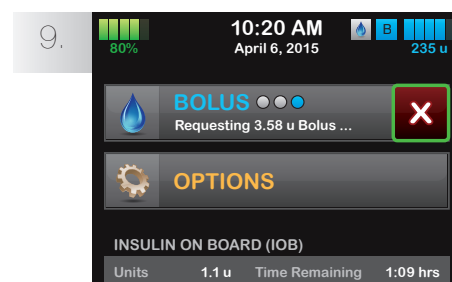
Verify the dose and tap **YES** to confirm.



Tap **DELIVER** to deliver the food bolus immediately.



The Splash Screen confirms delivery has started.



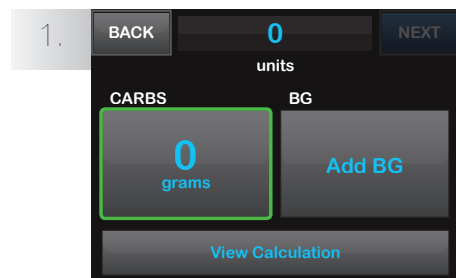
To cancel the undelivered portion of the bolus, tap the Red “X” on the BOLUS button on the Home Screen, then tap **YES** to confirm cancelled bolus.

Extended Bolus

on the t:slim X2™ Insulin Pump

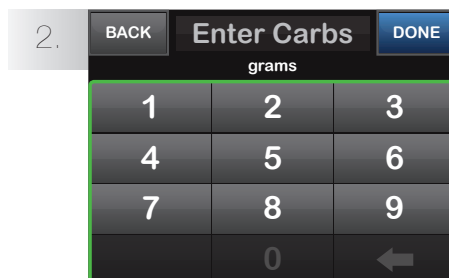


The instructions below are provided as a reference tool for those who are already familiar with the use of an insulin pump and with insulin therapy in general. Not all screens are shown.



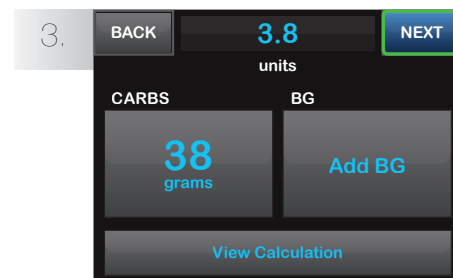
Tap **0 Grams** to enter the carbs for your bolus.

NOTE: If this button reads “units”, the Carb feature is turned off in the active profile.



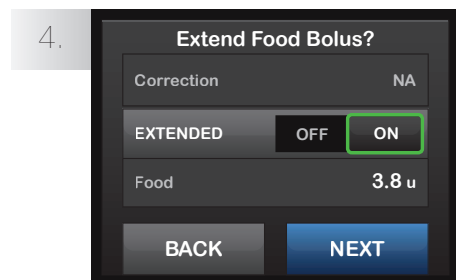
Enter desired value. Be sure “grams” is displayed above keypad for food boluses.

Tap **DONE** to continue.



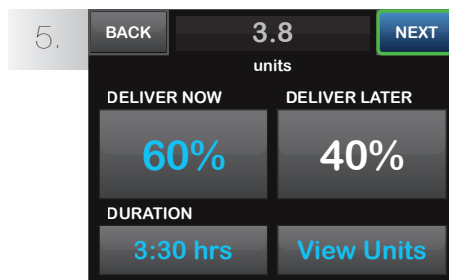
Tap **NEXT** to continue, then tap **YES** to confirm.

NOTE: If an above-target BG is entered, the correction bolus will not be extended.

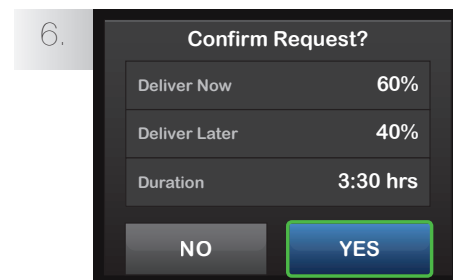


Tap **ON** to extend the bolus.

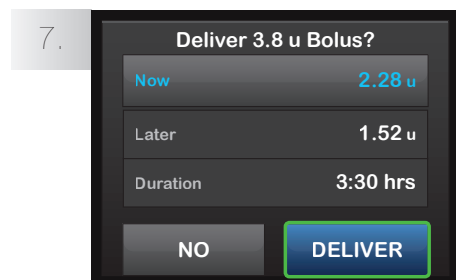
Tap **NEXT** to continue.



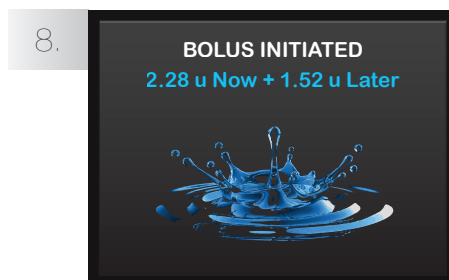
Tap **NEXT** to use default settings or tap the **DELIVER NOW** and **DURATION** buttons and set your desired values, then tap **NEXT** to continue.



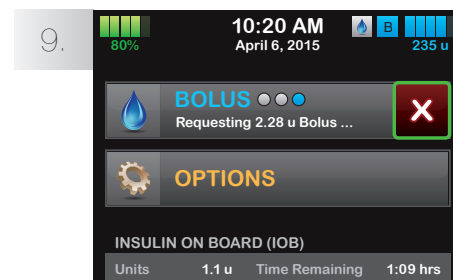
Tap **YES** to confirm.



The Delivery Screen will confirm how much insulin will be delivered up front, how much will be delivered over time, and the delivery duration. Tap **DELIVER** to start the bolus.



The Splash Screen confirms delivery has started.



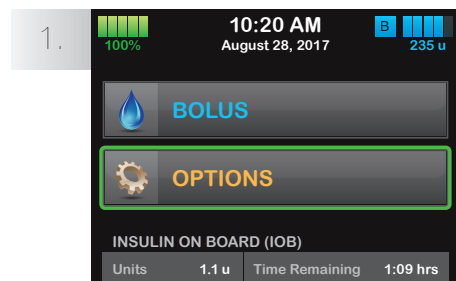
To cancel the undelivered portion of the bolus, tap the Red “X” on the **BOLUS** button on the Home Screen, then tap **YES** to confirm cancelled bolus.

Setting a Temp Basal Rate

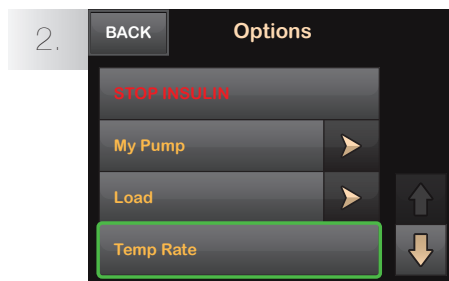
on the t:slim X2™ Insulin Pump



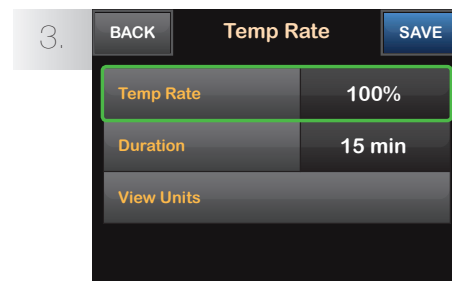
The instructions below are provided as a reference tool for those who are already familiar with the use of an insulin pump and with insulin therapy in general. Not all screens are shown.



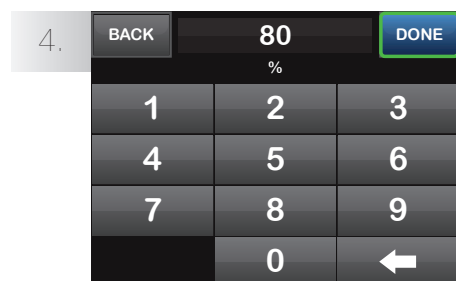
Tap **OPTIONS**.



Tap **Temp Rate**.

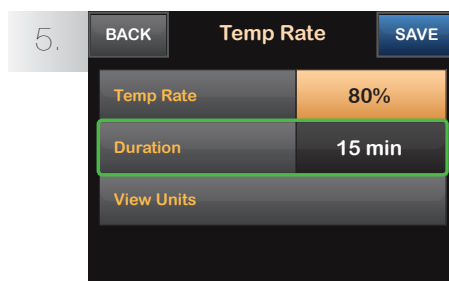


Tap **Temp Rate**.



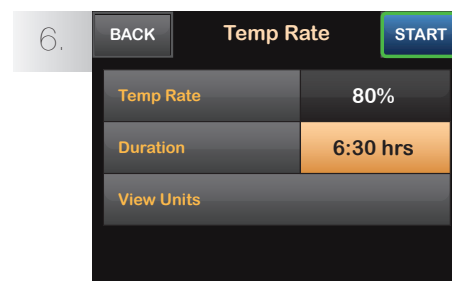
Using the onscreen keypad enter the desired percentage. Tap **DONE**.

NOTE: Current rate is 100%. An increase is greater than 100% and a decrease is less than 100%. For example; 80% is 20% less than your normal basal rate.



Tap **Duration**. Using the onscreen keypad, enter the desired length of time for Temp Rate. Tap **DONE**.

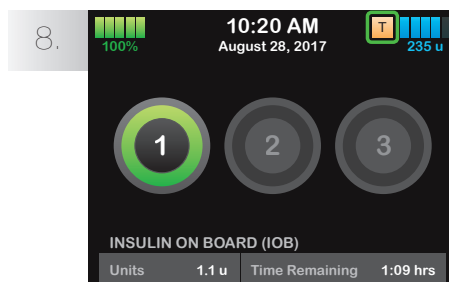
NOTE: To see the actual units to be delivered tap **View Units**.



Verify settings and tap **START**.

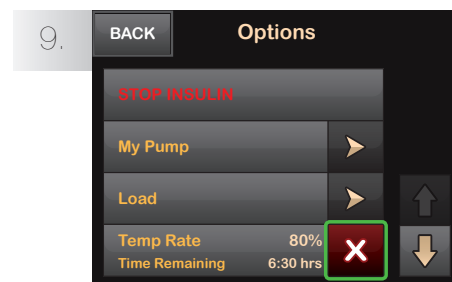


The **TEMP RATE STARTED** splash screen is displayed.



The Screen Lock screen will be displayed with the orange "T" icon indicating a Temp Rate is active.

NOTE: If a Temp Rate of 0% is currently active, the status of insulin delivery displays a red "T".



NOTE: To stop Temp Rate at any time, tap **OPTIONS**, tap **X**. A confirmation screen will be displayed. Tap **STOP**.

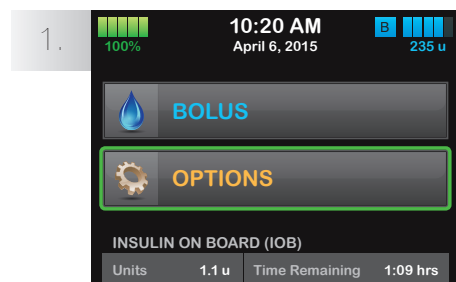
Stop and Resume Insulin Delivery

on the t:slim X2™ Insulin Pump

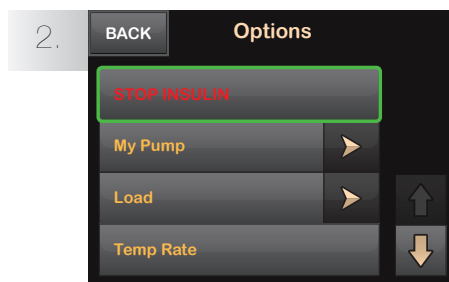


The instructions below are provided as a reference tool for those who are already familiar with the use of an insulin pump and with insulin therapy in general. Not all screens are shown.

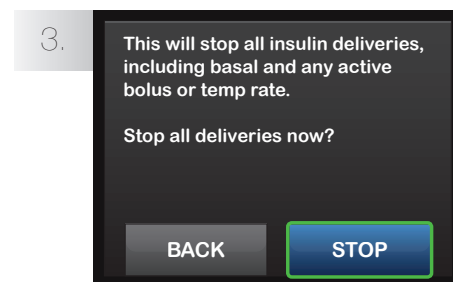
Stop Insulin Delivery



Tap **OPTIONS**.

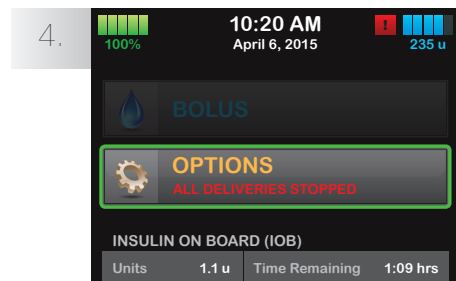


Tap **STOP INSULIN**.

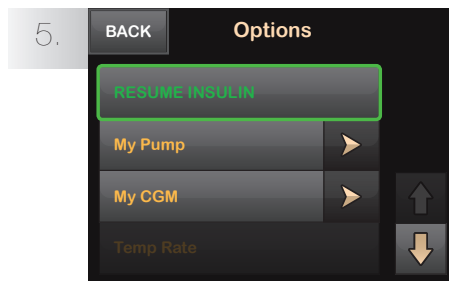


Tap **STOP**.

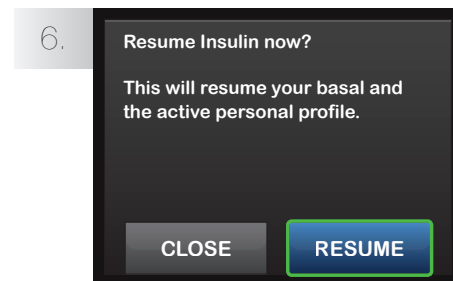
Resume Insulin Delivery



Tap **OPTIONS**.



Tap **RESUME INSULIN**.



Confirm by tapping **RESUME**.

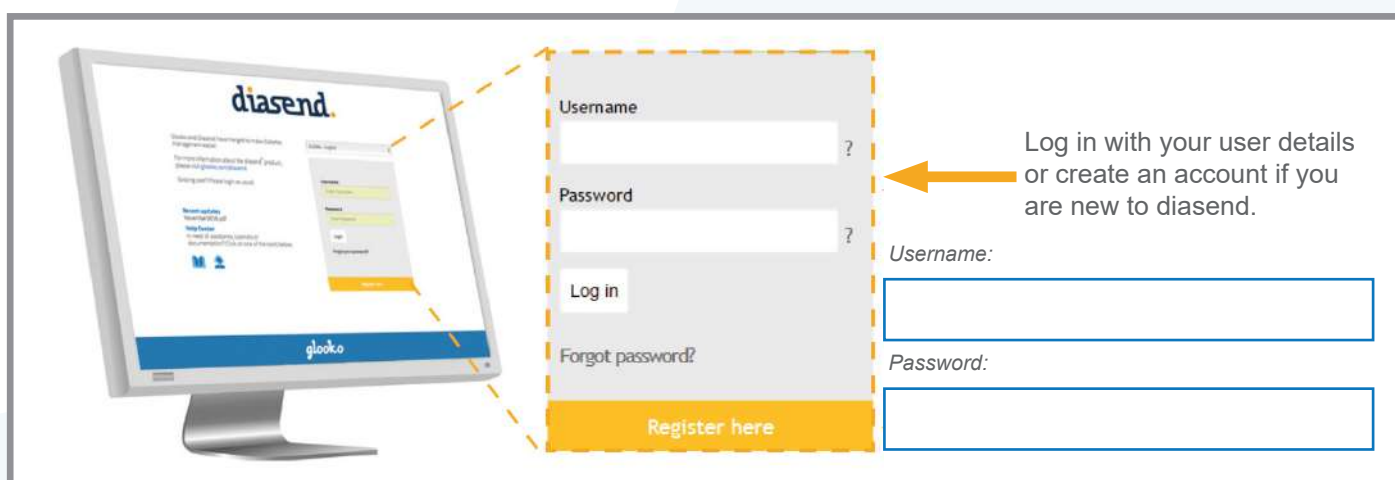
NOTE: Any temp rates or boluses active before you stopped delivery will not resume. It will resume your active personal profile.

Glooko diasend® Personal Uploader for t:slim X2

Getting Started Guide

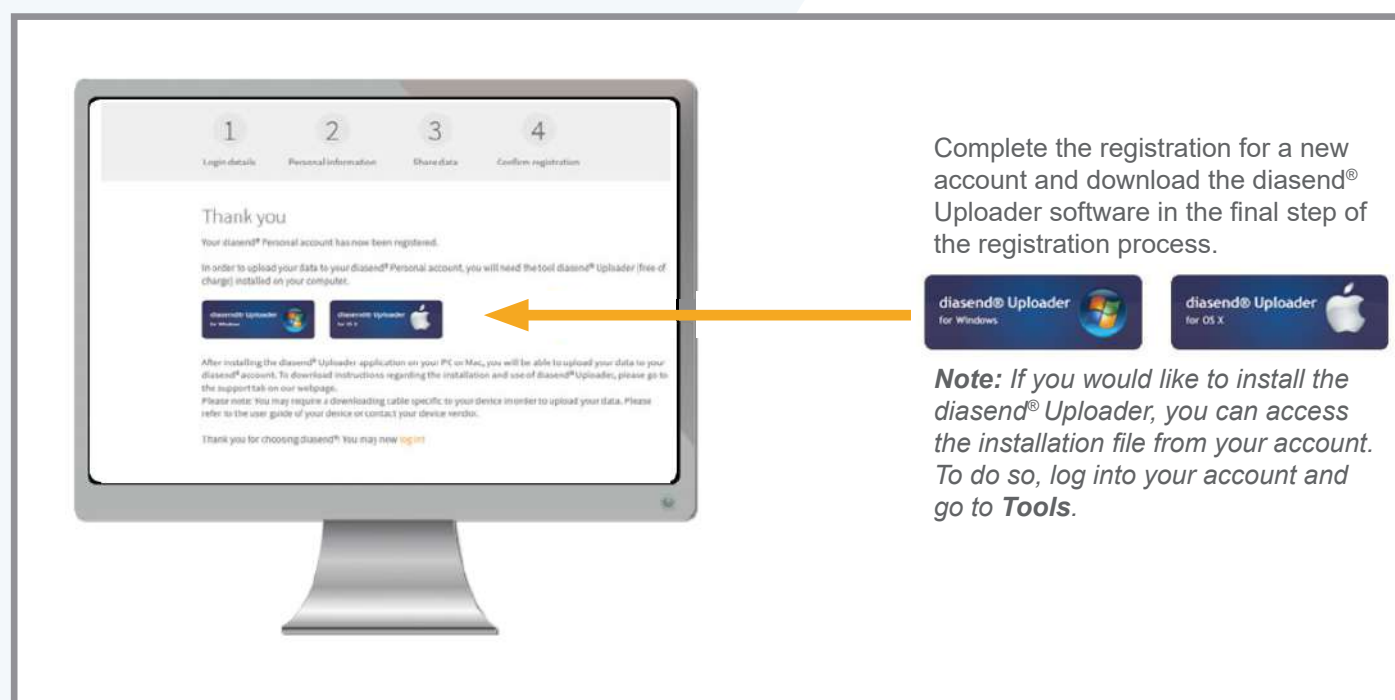


- 1 Log in or start a new account at www.diasend.com

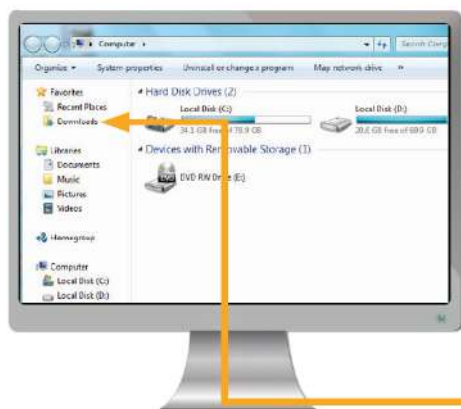


Note: Choose the icon for your country of residence.

- 2 Download the diasend Uploader software



3 Locate the installation file and run the file



Depending on your web browser, you may need to search for the downloaded installation file, or you may just get a pop up window to run the file.

If you are a PC user: look in your recent downloads folder.

If you are a Mac user: look in the downloads folder in Finder.

Note: Compatible operating systems:
Windows 7, 8 and 10, macOS X 10.6-10.13
Visit <https://goo.gl/YdGju1> to stay up to date with any compatibility changes.

4 Start diasend Uploader



Once installed, double click on the diasend Uploader icon on your desktop to start the program.

Note: Make sure you have restarted your computer before starting up diasend Uploader for the first time.

5 Connect your diabetes device cable to the computer

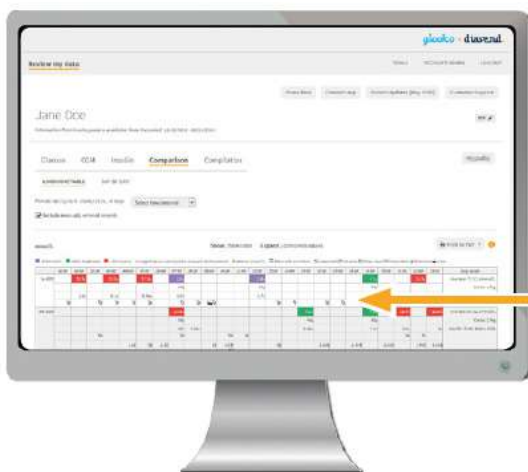


Connect the microUSB cable to the computer. Once the cable is connected, wait a few seconds for the cable drivers to be recognised, then connect to the t:slim X2 Insulin Pump.



Note: Make sure to use the cable that came with your t:slim X2 Insulin Pump.

6 Log in at www.diasend.com to view your data

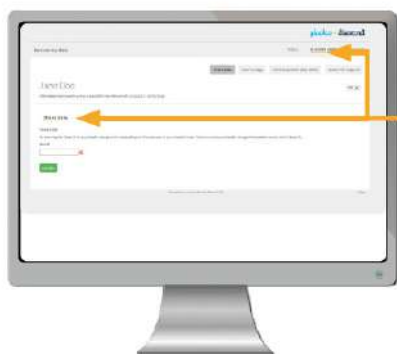


All your uploaded data is presented in easy-to-read tables and graphs.

The reports are divided into the following tabs:

Glucose CGM Insulin Comparison Compilation

7 Share your data with a clinic



You can share your data with your healthcare provider by entering their clinic ID, under the tabs **Account admin** and **Share data**. Don't forget to click **Update**.

ACCOUNT ADMIN

Share data

8 View your uploaded data in the diasend Mobile app



Download the app from Google Play or the App Store.
Log in with your personal diasend account details or create a new account.

With the diasend Mobile app you get:

- A summary of the latest uploaded data
- Easy to grasp reports on your insulin intake and glucose levels over time

Flying with your **t:slim X2** Insulin Pump



If you plan to travel by aeroplane with your insulin pump, some pre-planning may make your security screening go smoother. Your device is safe for use during air travel and complies with FAA wireless transmission standards. It is also designed to withstand common electromagnetic interference and can be safely carried through metal detectors.

However, your t:slim X2 Insulin Pump **should NOT be put through machines that use X-rays, including airline luggage X-ray machines and full-body scanners.** We recommend disconnecting at the infusion site and asking the security agent for an alternative screening method. If you prefer to stay connected, you can notify the agent about your pump and request to go through a standard metal detector wearing your pump.

It may be helpful to provide a letter from your healthcare professional, advising that your Insulin Pump should not be exposed to X-ray machines or full-body scanners. It may also be helpful to provide a printout of the information below to the security agent with your pump during screening (this is available on www.amslidiabetes.com.au for printing). If you have any questions about travelling with your pump, please call the **AMSL Diabetes Customer Care Team on 1300 851 056.**



Dear Airport Representative,

This is an insulin pump from Tandem Diabetes Care, a life-sustaining medical device prescribed by a healthcare professional. It is designed to withstand common electromagnetic interference and can be safely carried through metal detectors, but **should not be exposed to any form of X-rays.** This includes airline luggage X-ray machines and full-body scanners.

Please provide a screening method other than X-ray for this insulin pump. If you have any questions about this device, please call the **AMSL Diabetes Customer Care Team on 1300 851 056.**



Metal Detectors



X-rays, including full body scanners and luggage screening machines



t:slim X2

System Specifications



The following table lists t:slim X2 specifications and their related details.

Specification Type	Specification Details
Classification	External PSU: Class II, Infusion Pump. Internally-powered equipment, Type BF applied part. The risk of ignition of flammable anaesthetics and explosive gases by the pump is remote. While the risk is remote, it is not recommended to operate the t:slim X2 Pump in the presence of flammable anaesthetics or explosive gases.
Size	7.95 cm x 5.08 cm x 1.52 cm
Weight (with full disposable)	112 grams
Operating Temperature Range	10°C to 42°C at maximum relative humidity of 95% non-condensing
Storage Temperature Range	0°C to 45°C at maximum relative humidity of 95% non-condensing
Atmospheric Pressure	700 hPa to 1060 hPa (equivalent from 396 m up to 3048 m)
Cartridge Volume	3.0 mL or up to 300 units
Cannula Fill Amount	0.1 to 1.0 units of insulin
Insulin Concentration	U-100 Humalog or Novorapid
Alarm Type	Visual, audible, and vibratory
Basal Delivery Accuracy at all Flow Rates (tested per IEC 60601-2-24)	±5%*
Bolus Delivery Accuracy at all Volumes (tested per IEC 60601-2-24)	±5%*

* In extreme pressure environments, delivery accuracy may vary up to ±15%. Extreme pressure environments include any rapid elevation change of 305 metres.



t:slim X2

System Options and Settings



The following table lists t:slim X2 options and settings and their related details.

Option/Setting Type	Option/Setting Details
Time	12-hour clock and 24-hour clock
Maximum Basal Rate	15 units/hour
Insulin Delivery Profiles (Basal and Bolus)	Up to 6
Basal Rate Segments	16 per delivery profile
Basal Rate Increment	0.001 at programmed rates equal to or greater than 0.1 units/hour
Temp Basal Rate	15 minutes to 72 hours with 1 minute increments. Range: 0%-250%
Bolus Setup	Can deliver based on carb input (grams) or insulin input (units). (The range for carbs is 1-999 grams; the range for insulin is 0.05-25 units)
Insulin to Carb (IC) Ratio	16 time segments per 24-hour period; Ratio: 1 unit of insulin per x grams of carbs; 1:1 to 1:300 (resolution is 1 above 10 and 0.1 below 10)
BG Correction Target Value	16 time segments. 3.9 to 13.9 mmol/L in 0.1 mmol/L increments
Insulin Correction Factor (ICF)	16 time segments; Ratio: 1 unit of insulin reduces glucose x mmol/L; 1:0.1 to 1:33.3 (0.1 mmol/L increments)
Duration of Insulin Action	1 time segment; 2-8 hours in 1-minute increments (default is 5 hours)
Bolus Increment	0.01 at volumes greater than 0.05 units
Quick Bolus Increment	When set to units: 0.5, 1, 2, 5 units (default is 0.5 units); or when set to grams/carbs: 2, 5, 10, 15 grams (default is 2 g)
Maximum Extended Bolus Time	8 hours
Maximum Bolus Size	25 units
Low Reservoir Volume Indicator	Status indicator (visible on home screen); Low Insulin Alert (user adjustable: 10-40 units)
Auto-Off Alarm	On or Off (default is On); user-adjustable (5-24 hours; default is 12 hours, which you can change when option is set to On)
History Storage	Up to 90 days of data (11,000 events)
Language	English, French, Spanish, Italian, Swedish, Norwegian and Danish
Feature Lock	Blocks access to insulin delivery screens and pump setting screens (default is Off)
Screen Lock	Protects from unintentional taps on the touch screen
Site Reminder	Prompts user to change infusion set. Can be set for 1-3 days at a time selected by user (default is Off)

Option/Setting Type	Option/Setting Details
Missed Meal Bolus Reminder	Prompts user if a bolus has not occurred during the period of time the reminder is set. 4 reminders available (default is off)
After Bolus Reminder	Prompts user to test BG at a selected time period after a Bolus has been delivered. Increment options of 1 hour to 3 hours duration in 1 min increments (default is off)
High BG Reminder	Prompts user to retest BG after a High BG has been entered. User selects High BG value and time for reminder (default is off)
Low BG Reminder	Prompts user to retest BG after a Low BG has been entered. User selects Low BG value and time for reminder (default is off)

Additional technical specifications can be found in the [t:slim X2 User Guide](#).

The above details are current as of **January 2019**.

t:slim X2 Insulin Pump

t:lock Infusion Sets & Cartridge



AutoSoft 90



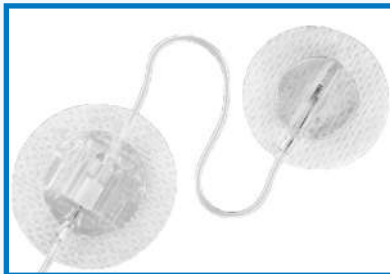
- 90° insertion angle
- Integrated inserter
- Teflon cannula

AutoSoft 30



- 30° insertion angle
- Integrated inserter
- Teflon cannula

TruSteel Set



- Manual straight in insertion
- Stainless steel/metal cannula

VariSoft Set



- Manual angled set
- Teflon cannula

t:lock Infusion Set NDSS Order Codes (10 per pack)

Tandem AutoSoft 90 Infusion Set t:lock 6mm/60cm	826
Tandem AutoSoft 90 Infusion Set t:lock 6mm/110cm	827
Tandem AutoSoft 90 Infusion Set t:lock 9mm/60cm	828
Tandem AutoSoft 90 Infusion Set t:lock 9mm/110cm	829
Tandem AutoSoft 30 Infusion Set t:lock 13mm/60cm	830
Tandem AutoSoft 30 Infusion Set t:lock 13mm/110cm	831
Tandem VariSoft Infusion Set t:lock 13mm/60cm	832
Tandem VariSoft Infusion Set t:lock 17mm/60cm	833

Tandem TruSteel Infusion Set t:lock 6mm/60cm	834
Tandem TruSteel Infusion Set t:lock 6mm/80cm (not currently available)	835
Tandem TruSteel Infusion Set t:lock 8mm/60cm	836
Tandem TruSteel Infusion Set t:lock 8mm/80cm (not currently available)	837

t:lock Cartridge

Tandem t:lock Cartridge	722
-------------------------	-----

Cannula Fill and Site Change Guidelines for Infusion Sets

	Fill	Site Change
AutoSoft 90	6mm: 0.3 units, 9mm: 0.5 units	2-3 days
AutoSoft 30	0.7 units	2-3 days
TruSteel	0 units/no fill	1-2 days
VariSoft	0.7 units	2-3 days



Shop



Events



Resources

amsldiabetes.com.au

For more information or for assistance, please contact AMSL Diabetes on
1300 851 056 or diabetes@amsl.com.au

amsldiabetes.com.au    

DEXCOM, DEXCOM G5, DEXCOM G5 MOBILE CGM are trademarks of Dexcom, Inc. HUMALOG is a trademark of Eli Lilly, and Company. NOVLOG and NOVORAPID are trademarks of Novo Nordisk A/S. COMFORT is a trademark of Unomedical A/S. The Bluetooth® word mark and logos are registered trade-marks owned by the Bluetooth SIG, Inc. and any use of such marks by Tandem Diabetes Care is under license. All other trademarks and copyrights are the property of their respective owners. Apple and the Apple logo are trademarks of Apple Inc., registered in the U.S. and other countries. App Store is a service mark of Apple Inc. Google Play is a trademark of Google Inc. ARTG 304681. PR-100-237 April 2019.

