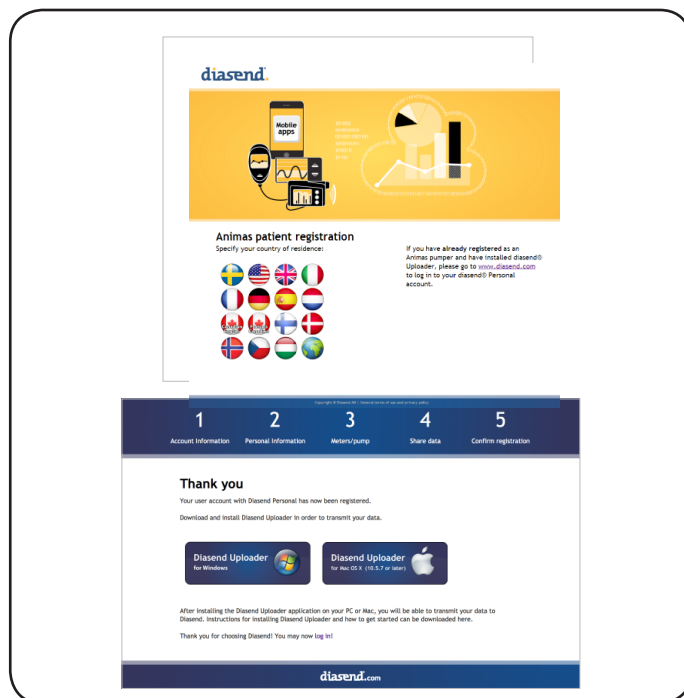


# Diasend® Uploader (for Patients) Getting Started.

## 1 Register on Diasend and Download Diasend Uploader.

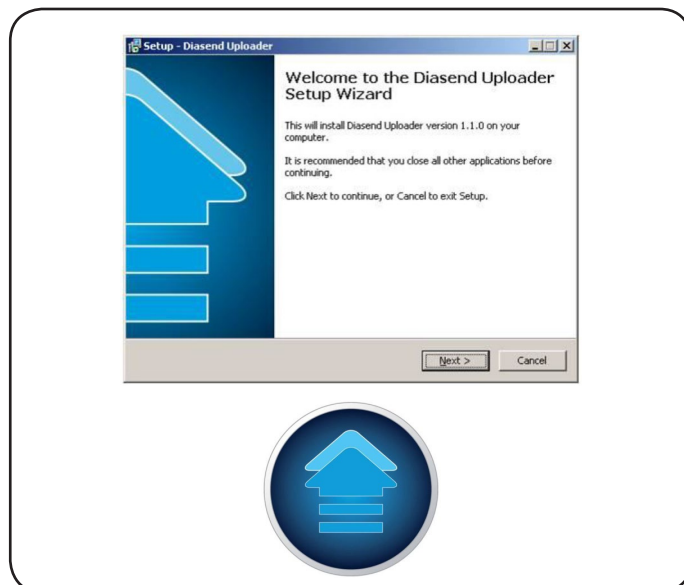
- Go to [Diasend.com/animas](http://Diasend.com/animas) to create a Diasend® account.  
NOTE: Choose the 🌐 for Australia
- If your clinic has Diasend, enter the Clinic ID (this can be added at a later time).
- Download Diasend Uploader Installation file at end of registration.



## 2 Install the Diasend Uploader.

- Run the installation program and follow the installation instructions.
- An icon will appear on your desktop when installation is finished.

Notes: \_\_\_\_\_  
\_\_\_\_\_  
\_\_\_\_\_



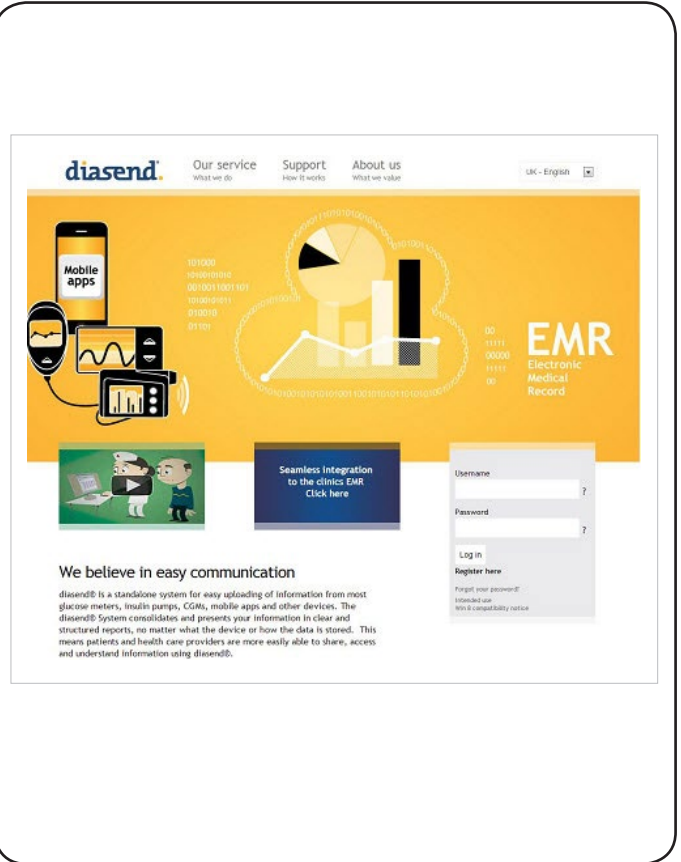
### 3 Uploading Data.

- Connect the wireless download cable to the computer.
- Uploading an Animas® pump:
  - Disconnect from body and put the pump in "Suspend" mode.
  - Place the pump with its back toward the wireless download cable (distance should not exceed four inches).
  - Double click on the Diasend® Uploader icon on the desktop.
  - Wait until the connection is made and the data is transferred.
  - Resume pump. Reconnect to body.
- Uploading a meter:
  - Connect the meter to the computer with the transfer cable.
  - Follow the blue points above.



### 4 Log-In To Diasend.com to View Data.

- After upload is complete, you will be directed to Diasend.com.
- Log-in with information you entered in the registration (step 1) to review your data.



**NOTE: If your AMSL Diabetes representative has already created a Diasend account for you, log in with your account details:**

**Username** \_\_\_\_\_

**Password** \_\_\_\_\_

**Once logged in, go to the TOOLS Tab and select the appropriate Diasend Uploader for your system.**



**To find out more call 1300 851 056**

Diasend® is a trademark of Diasend, Inc.  
Animas® is a registered trademark and used under license.  
© 2013 Animas Corporation 2013/07 Rx Only. DCF-13-2616A