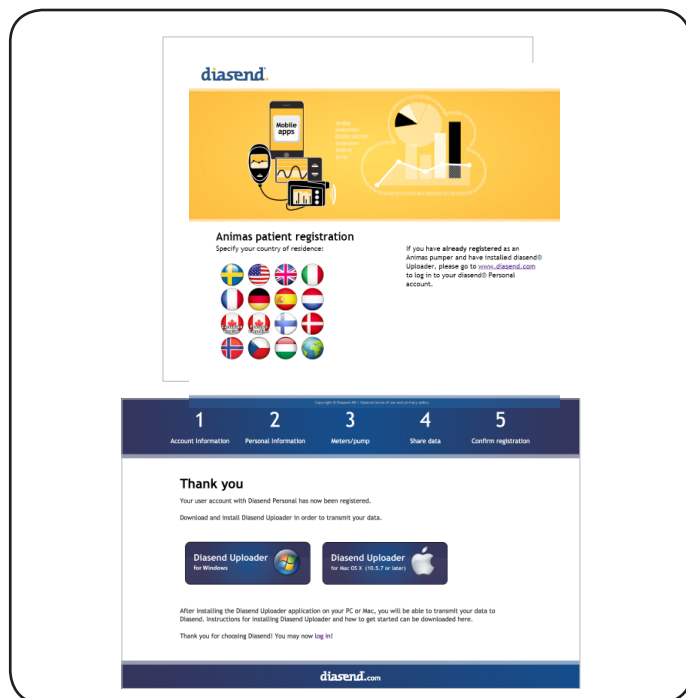


Diasend® Uploader (for Patients) Getting Started.

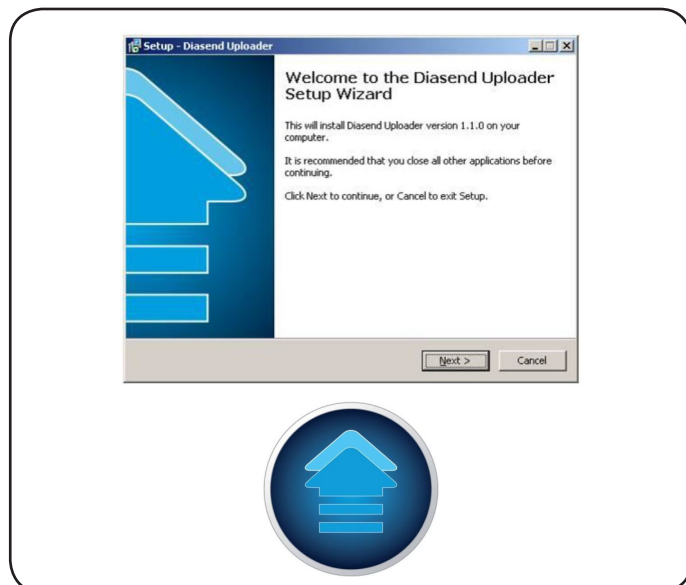
1 Register on Diasend and Download Diasend Uploader.

- Go to Diasend.com/animas to create a Diasend® account.
NOTE: Choose the 🌐 for Australia
- If your clinic has Diasend, enter the Clinic ID (this can be added at a later time).
- Download Diasend Uploader Installation file at end of registration.



2 Install the Diasend Uploader.

- Run the installation program and follow the installation instructions.
- An icon will appear on your desktop when installation is finished.



Notes: _____

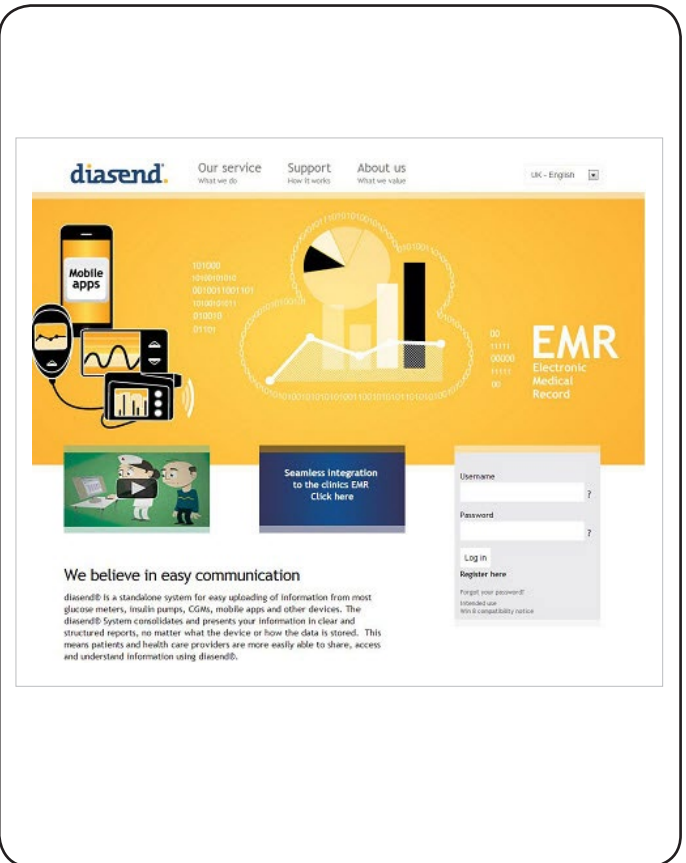
3 Uploading Data.

- Connect the wireless download cable to the computer.
- Uploading an Animas® pump:
 - Disconnect from body and put the pump in "Suspend" mode.
 - Place the pump with its back toward the wireless download cable (distance should not exceed four inches).
 - Double click on the Diasend® Uploader icon on the desktop.
 - Wait until the connection is made and the data is transferred.
 - Resume pump. Reconnect to body.
- Uploading a meter:
 - Connect the meter to the computer with the transfer cable.
 - Follow the blue points above.



4 Log-In To Diasend.com to View Data.

- After upload is complete, you will be directed to Diasend.com.
- Log-in with information you entered in the registration (step 1) to review your data.



NOTE: If your AMSL Diabetes representative has already created a Diasend account for you, log in with your account details:

Username _____

Password _____

Once logged in, go to the TOOLS Tab and select the appropriate Diasend Uploader for your system.



To find out more call 1300 851 056

Diasend® is a trademark of Diasend, Inc.
Animas® is a registered trademark and used under license.
© 2013 Animas Corporation 2013/07 Rx Only. DCF-13-2616A